



### 概述 General

1. BTF系列全自动分体式燃烧器的功率范围为600-22000KW, 在对应的燃烧功率、锅炉背压和不同燃料的情况下可选配适当的鼓风机型号。所配置的程序控制器和火焰探测器都带24小时火焰信号自检功能。
2. 全自动的燃油/燃气双燃料燃烧器特别为高调节比而设计, 因此这些BTF系列燃烧器的控制范围很广泛。
3. 燃油雾化方式: 可选择采用高压机械雾化或采用低压介质雾化。
4. 主油管路安置在燃烧器本体上, 独立的油泵组, 包括油泵和油过滤器。
5. 钢制全密封外壳, 打开上盖板可对内部组件进行维修。

### 6. 多种控制方式, 标准配置为机械比例, 但可为不同操作上的需求而设, 如电子比例带氧量控制器, 电子比例控制双燃料燃烧系统等。

1. The power range of BTF series full-automatic separated type burner is 600-22000KW, it can be equipped with the suitable fan according to the combustion power, boiler back pressure and different fuel. Both the program controller and flame detector have 24-hour self detection of flame signal.
2. The full-automatic fuel oil / gas dual-fuel burners are specially designed for the supremely accurate adjusting ratio, therefore, BTF series burner has wide range in the control.
3. Fuel atomization type: optional high pressure mechanical atomization or low pressure medium atomization.
4. The main oil pipeline is mounted at the burner body, individual oil pump unit, including the oil pump and oil filter.
5. It shows the steel-made full-seal enclosure, only opening the top cover, the inner components can be maintained.

### 6. There are kinds of control modes, the standard configuration is the mechanical scale, however, it can be set according to the different operation demands, for instance, the electronic-scale oxygen controller, electronic-scale control dual-fuel combustion system, etc...

### 技术参数 Technology Data

功率 Power kW	型号 Model	订货编号 Order No.	最大粘度 Max Viscidity E@20°C	电源 Power supply	燃油量(轻油) Fuel (Light oil) kg/h	燃气量 Gas Nm <sup>3</sup> /h	包装尺寸 Packing size cm	重量 Net weight kg
600~2450	BTF2GL	202 30 100	1.5	380V 50Hz	50 ~ 206	60~247	1408x718x899	
900~4100	BTF4GL	202 30 101	1.5	380V 50Hz	76 ~ 345	91~414	1668x678x1019	
1100~5700	BTF6GL	202 30 102	1.5	380V 50Hz	93 ~ 480	111~576	1668x678x1019	
1100~7100	BTF8GL	202 30 103	1.5	380V 50Hz	93 ~ 599	111~717	2090x880x1250	
1400~9600	BTF10GL	202 30 104	1.5	380V 50Hz	118 ~ 810	141~970	2090x880x1250	
1400~12000	BTF12GL	202 30 105	1.5	380V 50Hz	118 ~ 1012	141~1212	2560x1220x1430	
2500~14000	BTF15GL	202 30 106	1.5	380V 50Hz	211 ~ 1180	252~1414	2560x1220x1430	
3550~17500	BTF20GL	202 30 107	1.5	380V 50Hz	300 ~ 1476	358~1767	2610x1360x1570	
3800~22000	BTF25GL	202 30 108	1.5	380V 50Hz	320 ~ 1855	384~2222	2610x1360x1570	

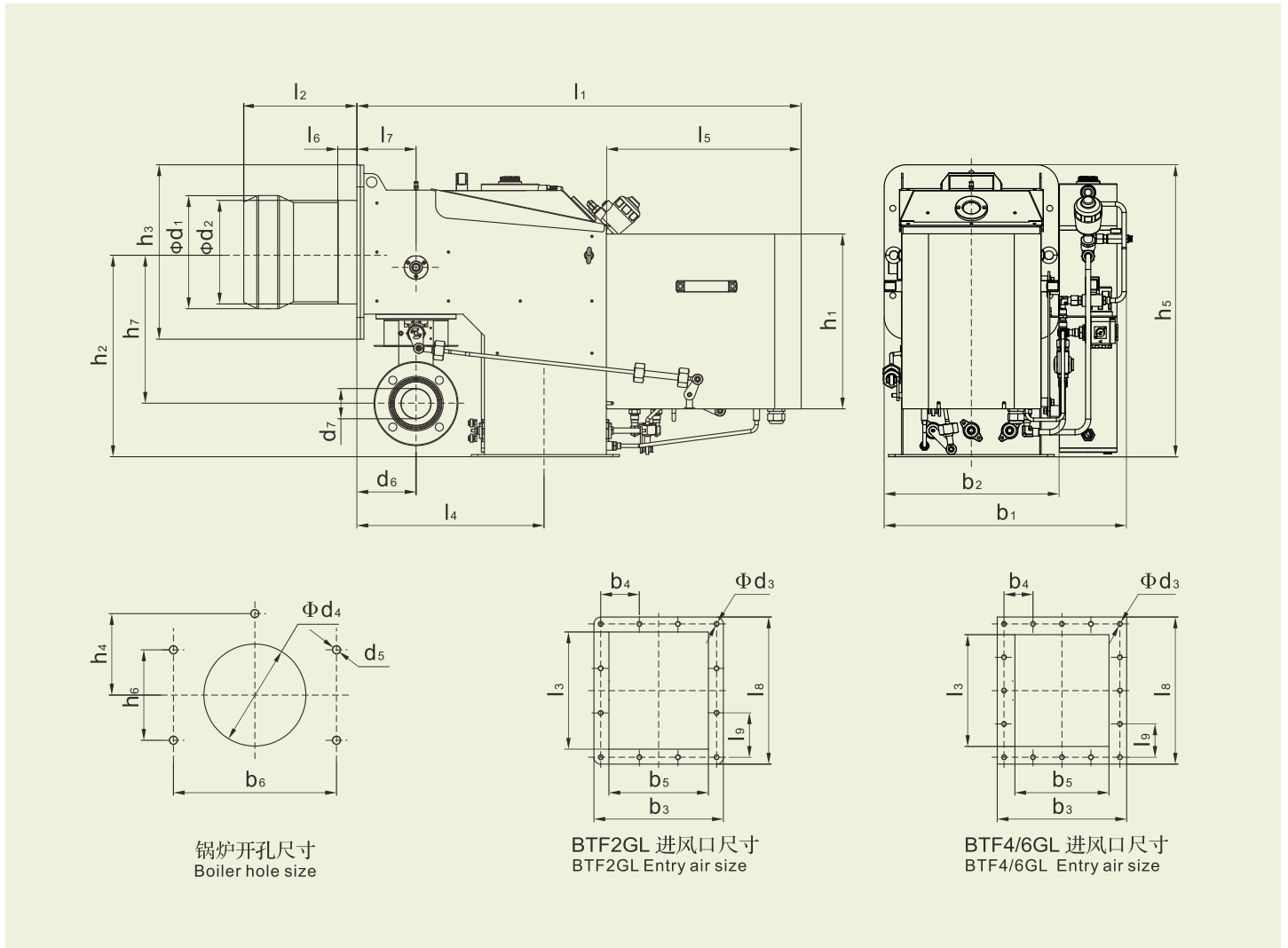
# BTF2GL...6GL 分体式燃气/轻油燃烧器

## Split type Gas & Light oil Burner



外形尺寸图 Outline size diagram

型号Model: BTF2GL...6GL



单位Unit: mm

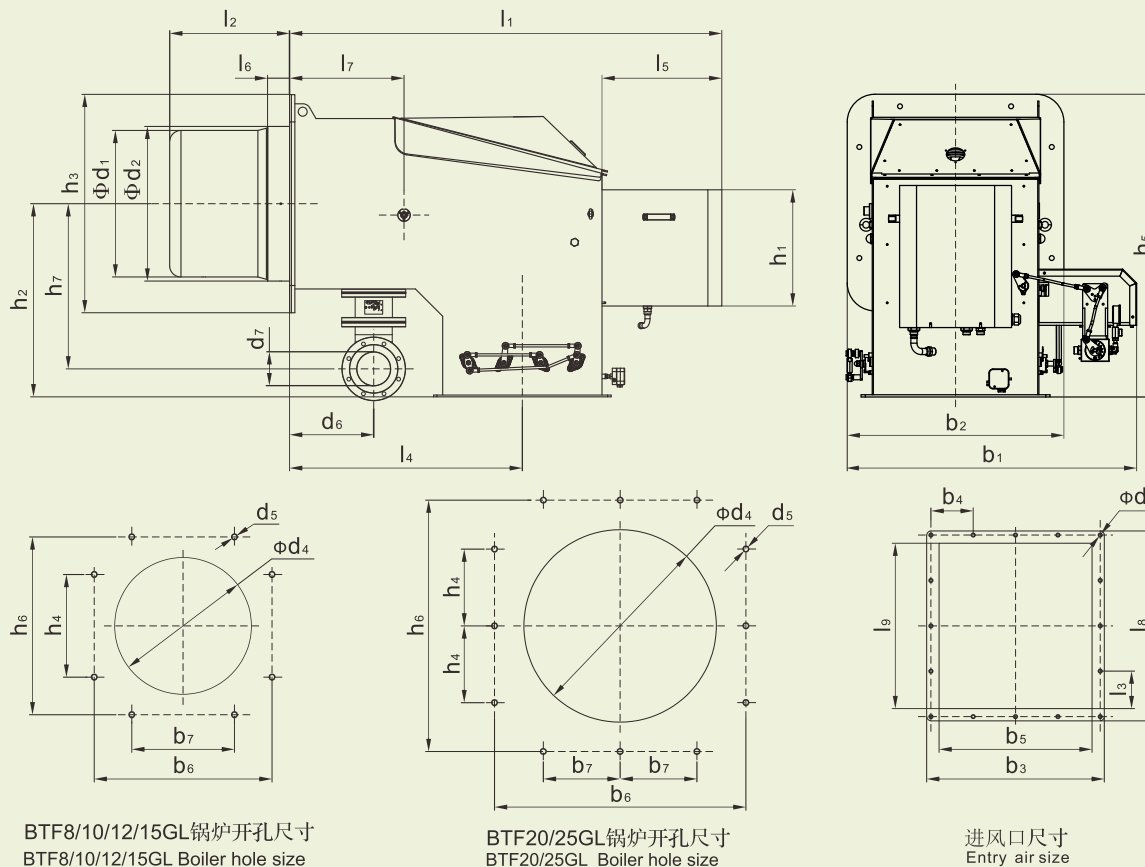
型号Model	$l_1$	$l_2$	$l_3$	$l_4$	$l_5$	$l_6$	$l_7$	$l_8$	$l_9$	$h_1$	$h_2$	$h_3$	$h_4$	$h_5$	$h_6$
BTF2GL	1020.5	260	264	433	447.5	44	136	380	3-116.7	401.5	470	400	180	670	200
BTF4GL	1174.5	336	334	545	447.5	62	203	450	4-105	431.5	517	540	245	787	270
BTF6GL	1174.5	346	334	545	447.5	62	203	450	4-105	431.5	517	540	245	787	270

单位Unit: mm

型号Model	$h_7$	$b_1$	$b_2$	$b_3$	$b_4$	$b_5$	$b_6$	$\Phi d_1$	$\Phi d_2$	$\Phi d_3$	$\Phi d_4$	$d_5$	$d_6$	$d_7$
BTF2GL	360	569	-	340	3-103.3	224	360	260	238	12- $\Phi 8.5$	270	5-M12	136	DN65
BTF4GL	432	-	540	424	4-98.5	308	490	300	335	16- $\Phi 8.5$	375	5-M12	157	DN80
BTF6GL	432	-	540	424	4-98.5	308	490	365	335	16- $\Phi 8.5$	375	5-M12	157	DN80

### 外形尺寸图 Outline size diagram

型号Model: BTF8GL...25GL



单位Unit: mm

型号Model	l <sub>1</sub>	l <sub>2</sub>	l <sub>3</sub>	l <sub>4</sub>	l <sub>5</sub>	l <sub>6</sub>	l <sub>7</sub>	l <sub>8</sub>	l <sub>9</sub>	h <sub>1</sub>	h <sub>2</sub>	h <sub>3</sub>	h <sub>4</sub>	h <sub>5</sub>	h <sub>6</sub>
BTF8GL	1489.5	415	434	760	526.5	70	320	568	4-134.5	511.5	650	700	367.5	1000	636.5
BTF10GL	1489.5	415	434	760	526.5	70	320	568	4-134.5	511.5	650	700	367.5	1000	636.5
BTF12GL	1827.5	555	532	1023	526.5	67	523	680	4-162.5	511.5	700	780	400	1090	693
BTF15GL	1827.5	555	532	1023	526.5	67	523	680	4-163.5	511.5	700	780	400	1090	693
BTF20GL	1899.5	527	632	1023	526.5	97	503	780	5-150	511.5	850	960	2-275	1330	900
BTF25GL	1899.5	527	632	1023	526.5	97	503	780	5-150	511.5	850	960	2-275	1330	900

单位Unit: mm

型号Model	h <sub>7</sub>	b <sub>1</sub>	b <sub>2</sub>	b <sub>3</sub>	b <sub>4</sub>	b <sub>5</sub>	b <sub>6</sub>	b <sub>7</sub>	Φd <sub>1</sub>	Φd <sub>2</sub>	Φd <sub>3</sub>	Φd <sub>4</sub>	d <sub>5</sub>	d <sub>6</sub>	d <sub>7</sub>
BTF8GL	335.5	-	700	486	3-152	352	636.5	367.5	480	459	14-Φ8.5	490	8-M12	545	DN100
BTF10GL	335.5	-	700	486	3-152	352	636.5	367.5	480	459	14-Φ8.5	490	8-M12	545	DN100
BTF12GL	447	1042	-	636	4-151.5	488	693	400	600	562	16-Φ8.5	610	8-M16	656	DN125
BTF15GL	447	1042	-	636	4-151.5	488	693	400	600	562	16-Φ8.5	610	8-M16	656	DN125
BTF20GL	522	1182	-	780	5-150	632	900	2-275	645	681	20-Φ8.5	690	12-M14	575	DN150
BTF25GL	522	1182	-	780	5-150	632	900	2-275	645	681	20-Φ8.5	690	12-M14	575	DN150